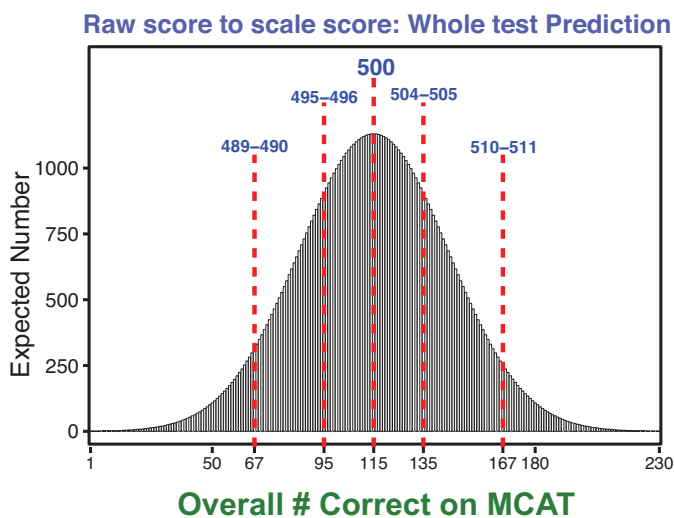
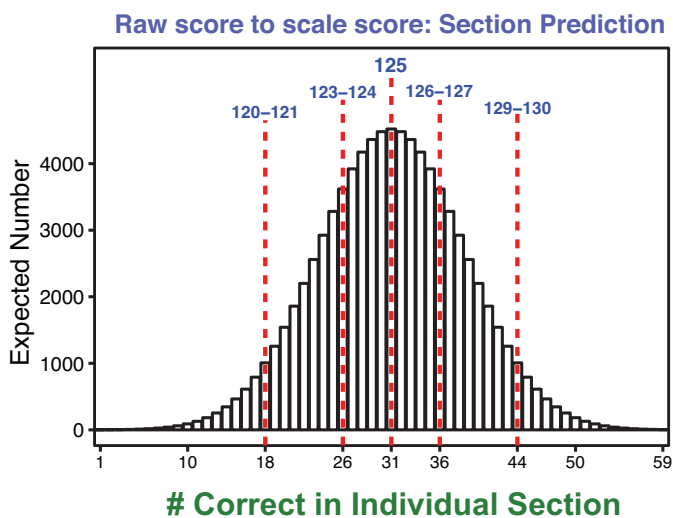


The MCAT will add the scores from the four sections (Chemical/Physical, Critical Reasoning, Biological, and Behavioral) to arrive at the total score. Individual section scores will be reported in a range from 118-132 (both the mean and median are expected to be ~125). This translates to a total range of achievable scores ranging from 472-528 with the mean centered near 500. Thus, a 500 on the MCAT will represent a score at the 50th percentile. This means that students scoring a total of 500 will have performed better than 1/2 of the students taking the test. The score scales for the exam, with the distributions centered near 500, will minimize clustering of scores towards the higher levels of the scale. In contrast to the previous MCAT, the new exam will provide a percentile rank as part of the score report. As with nearly all standardized tests, scores are expected to follow a normal distribution. The AAMC estimates that approximately 85,000 people will take the MCAT per year starting in 2015. Approximately 70% of test takers are expected to score between 493 and 507. Students will receive score reports that include total MCAT scores, percentile ranks, confidence intervals, as well as score profiles. This information will be provided for the total score and for the individual section tests (Chemical/Physical, Critical Reasoning, Biological, and Behavioral).

The expected distribution of raw and scaled scores by number, percentile, and standard deviation units are shown in the tables and figures in the following pages, for both the section test scores and the overall MCAT score. These projected values are based on data obtained from the AAMC regarding the new number of questions, scoring range and expected mean, previously published test standard deviations, and the approximate number of students who take the test annually. When applying to medical schools, you may have access to information about the percentile scores of the median applicant to a particular school. The tables and figures below will help you determine the new MCAT score that you need to be competitive for consideration at a particular medical school.



**Histogram of Expected Overall Test Score Distributions: 2015 MCAT.** Each bar represents the projected number of test takers (out of 85,000 total) who will achieve that raw score (number correct). Red dashed lines represent scores at the projected 5<sup>th</sup>, 25<sup>th</sup>, 50<sup>th</sup>, 75<sup>th</sup>, and 95<sup>th</sup> percentiles. Blue numbers above red dashed lines represent the anticipated MCAT scaled score equivalent.

Table 1 represents a more detailed view of what we anticipate the scaling of raw scores (number correct) to MCAT scaled scores will look like. This table is a highly reasonable estimation of how the AAMC will score the real exams and is based upon the statistical descriptions provided in their website ([aamc.org/mcat/2015](http://aamc.org/mcat/2015)). In other words, this is a pretty good estimate. The distribution presented here assumes that there will be 85,000 students taking the test. For example, if you were to get 28 questions correct for a given science section, then your predicted MCAT score would be a 124. This is a 34.46% and we would predict that 4,173 other students also got 28 questions correct. It is probably not pragmatic to shoot for getting all 59 questions correct, as only 4 individuals out of 85,000 should do this!! If you are shooting high, then breaking 40 correct (which is a 128 or higher) would put you near the 90<sup>th</sup> percentile. Our goal at Med-Pathway.com is to help you achieve a highly competitive score and gain entrance to Medical School.

**Table I. Score predictions of a 59-question Science Section**

Number Correct	MCAT Scaled Score	Expected Percentile Score	Expected Number
1	118	0.01	2
2		0.01	3
3		0.01	4
4		0.02	7
5		0.03	11
6		0.04	17
7		0.07	27
8		0.11	41
9		0.17	61
10		0.26	90
11		0.38	129
12		0.56	183
13	119	0.82	254
14		1.17	346
15		1.64	465
16	120	2.28	612
17		3.10	792
18		4.15	1007
19	121	5.48	1257
20		7.12	1542
21		9.12	1859
22	122	11.51	2201
23		14.31	2560
24		17.53	2925
25	123	21.19	3284
26		25.25	3621
27		29.69	3922
28	124	34.46	4174
29		39.49	4364
30		44.70	4482
31	125	50.00	4522
32		55.30	4482
33		60.51	4364
34	126	65.54	4174
35		70.31	3922
36		74.75	3621
37	127	78.81	3284
38		82.47	2925
39		85.69	2560
40	128	88.49	2201
41		90.88	1859
42		92.88	1542
43	129	94.52	1257
44		95.85	1007
45		96.90	792
46	130	97.72	612
47		98.36	465
48		98.83	346
49	131	99.18	254
50		99.44	183
51		99.62	129
52	132	99.74	90
53		99.83	61
54		99.89	41
55		99.93	27
56		99.96	17
57		99.97	11
58		99.98	7
59		99.99	4

Table 2 represents a more detailed view of what we anticipate that the scaling of raw scores (number correct) to MCAT scaled scores will look like on the CARS Section. This table uses all of the statistical assumptions applied for the Chemical/Physical Foundations, Biological Foundations, and Behavioral Foundations sections. The key exception is, of course, that the Critical Reasoning Section has only 53 questions.

**Table 2. Score predictions for the 53-question Critical Reasoning section**

<b>Number Correct</b>	<b>MCAT Scaled Score</b>	<b>Expected Percentile Score</b>	<b>Expected Number</b>
1	118	0.01	3
2		0.01	5
3		0.02	9
4		0.03	15
5		0.06	25
6		0.09	40
7		0.15	62
8		0.24	96
9	119	0.38	144
10		0.59	211
11		0.89	303
12	120	1.31	425
13		1.90	585
14		2.71	786
15	121	3.77	1035
16		5.16	1332
17		6.92	1677
18	122	9.12	2065
19		11.80	2489
20		14.99	2934
21	123	18.70	3384
22		22.94	3818
23		27.67	4215
24	124	32.84	4551
25		38.35	4808
26		44.11	4969
27	125	50.00	5024
28		55.89	4969
29		61.65	4808
30	126	67.16	4551
31		72.33	4215
32		77.06	3818
33	127	81.30	3384
34		85.01	2934
35		88.20	2489
36	128	90.88	2065
37		93.08	1677
38		94.84	1332
39	129	96.23	1035
40		97.29	786
41		98.10	585
42	130	98.69	425
43		99.11	303
44		99.41	211
45	131	99.62	144
46		99.76	96
47		99.85	62
48	132	99.91	40
49		99.94	25
50		99.97	15
51		99.98	9
52		99.99	5
53		99.99	3

Putting it all together, Table 3 shows the total number correct on all four sections of the new MCAT and how this value is translated to a scaled score, percentile, and the number of individuals predicted to achieve those scores. Note that our statistical prediction models are in accordance with the AAMC defined values in that a 500 will be the midpoint and is set to be the 50%. Our goal of Med-Pathway is to help you achieve a highly competitive overall score that will facilitate your acceptance into Medical School.

Despite what many think, the MCAT is not scored on a curve. With the exception of the first 2015 MCAT offered, the MCAT “equates” scores. Imagine two students that took the exam months apart and received identical scores of 500. On the surface, you might think that each student answered the same number of questions correctly, but this will not necessarily be the case. As each student took a different MCAT covering different topics (no single MCAT exam covers equivalent or all competencies), one test may have been more “difficult” than the other. Keep in mind that there are

**Table 3. Relationship between Number correct and MCAT score.**

Est. # Correct Range	MCAT Scaled Score	Expected Percentile Score	Expected Number
1--4	472	0.01	1
5--8	473	0.01	1
9--12	474	0.02	2
9--12	475	0.02	4
13--16	476	0.03	7
13--16	477	0.03	12
17--24	478	0.05	20
25--30	479	0.08	33
31--33	480	0.50	52
34--36	481	0.50	82
37--39	482	0.50	125
40--42	483	0.66	186
43--46	484	0.77	272
47--51	485	1.15	388
52--55	486	1.70	542
56--59	487	2.44	738
60--64	488	3.45	984
65--69	489	4.78	1281
72--78	490	6.49	1630
70--74	491	8.63	2028
75--79	492	11.27	2465
80--87	493	14.44	2928
88--92	494	18.17	3399
93--96	495	22.44	3856
97--100	496	27.22	4276
101--106	497	32.47	4634
107--109	498	38.09	4907
110--112	499	43.98	5079
113--119	500	50.00	5138
120--123	501	56.02	5079
124--128	502	61.91	4907
129--132	503	67.53	4634
133--137	504	72.78	4276
138--141	505	77.56	3856
142--146	506	81.83	3399
147--150	507	85.56	2928
151--155	508	88.73	2465
156--159	509	91.37	2028
160--164	510	93.51	1630
165--168	511	95.22	1281
169--173	512	96.55	984
174--178	513	97.56	738
179--182	514	98.30	542
183--186	515	98.85	388
187--192	516	99.23	272
193--196	517	99.54	186
197--200	518	99.77	125
201--203	519	99.83	82
204--206	520	99.89	52
207--209	521	99.91	33
210--212	522	99.95	20
213--215	523	99.99	12
216--218	524	99.99	7
219--221	525	99.99	4
222--224	526	99.99	2
225--227	527	99.99	1
228--230	528	99.99	1

many “MCAT isoforms” and the test that you take is like a random draw. Because of this, it is very challenging to construct various MCAT isoforms of equivalent difficulty. To adjust for these differences, the administrators of the exam modulate the scoring scales to compensate for this.